

Brummel Land Company

Farm and Commercial Real Estate
9947 E 1600 North Rd • Pontiac, Illinois
815-674-3006

Mueller Farm

Prophetstown Township

Whiteside County, IL

\$13,500/acre or \$2,086,155

Size

154.53 acres +/-

PIN #'s / Legal Description / Acres / Tax amount

Parcel ID 21-21-400-002 - LEGAL S 1/2 SE SEC 21 TWP 19 RNG 548400x/ 79.99 acres /
Tax = \$3,054.94

Parcel ID 21-28-200-004 - PT E 1/2 NE SEC 28 TWP 19 RNG 5 MF 8636-99 / 74.54 acres /
Tax = \$3482.60

Location

The farms are located about 3 miles South of Prophetstown IL.

Improvements

There are no improvements on the farms.

Taxes

Total Property Tax = \$42.31/acre

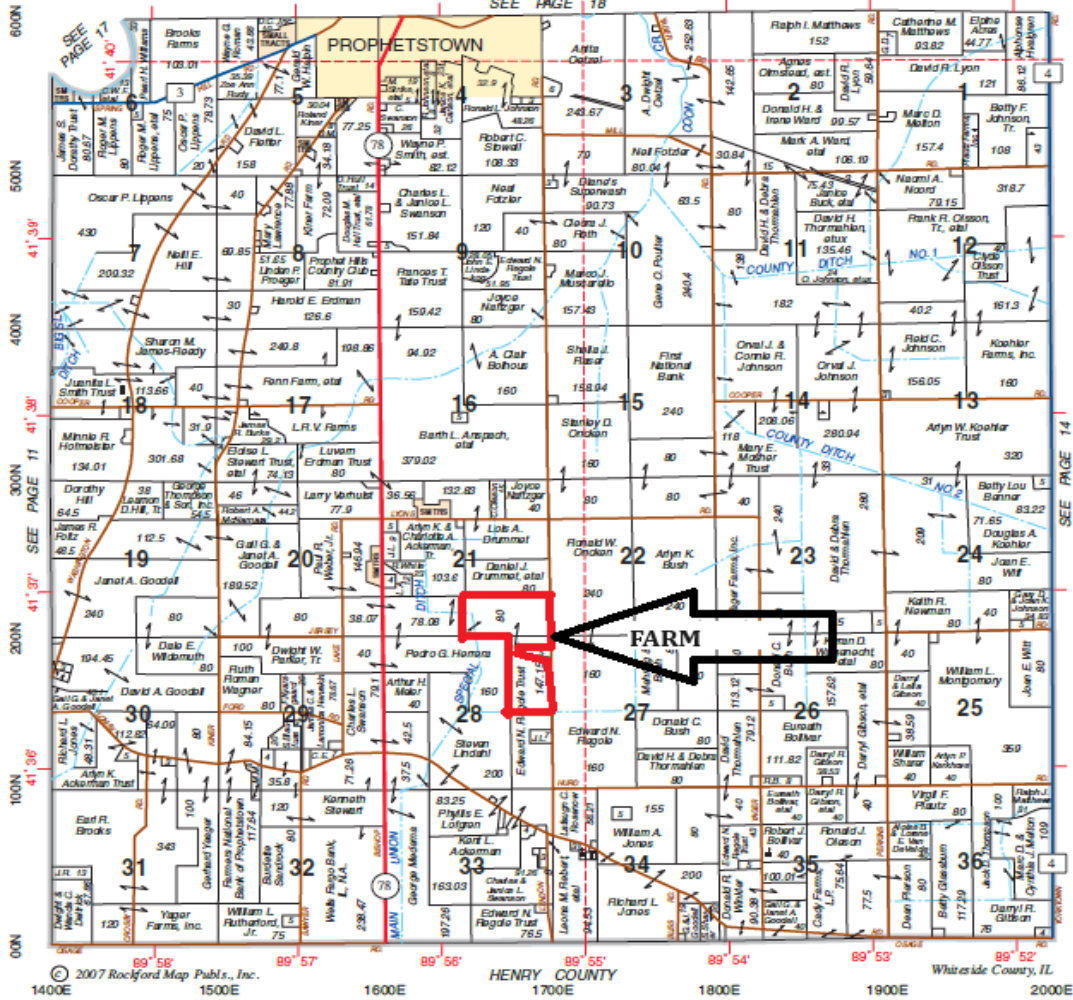
Soils

This farm has a 133.2 PI and is predominantly Prophetstown & Drummer soils.

SOUTH PART **PROPHETSTOWN**

T.19N.-R.5E.

SEE PAGE 18



© 2007 Rockford Map Pubs., Inc. 1500E

HENRY COUNTY

Whiteside County, IL

1400E

1500E

1600E

1700E

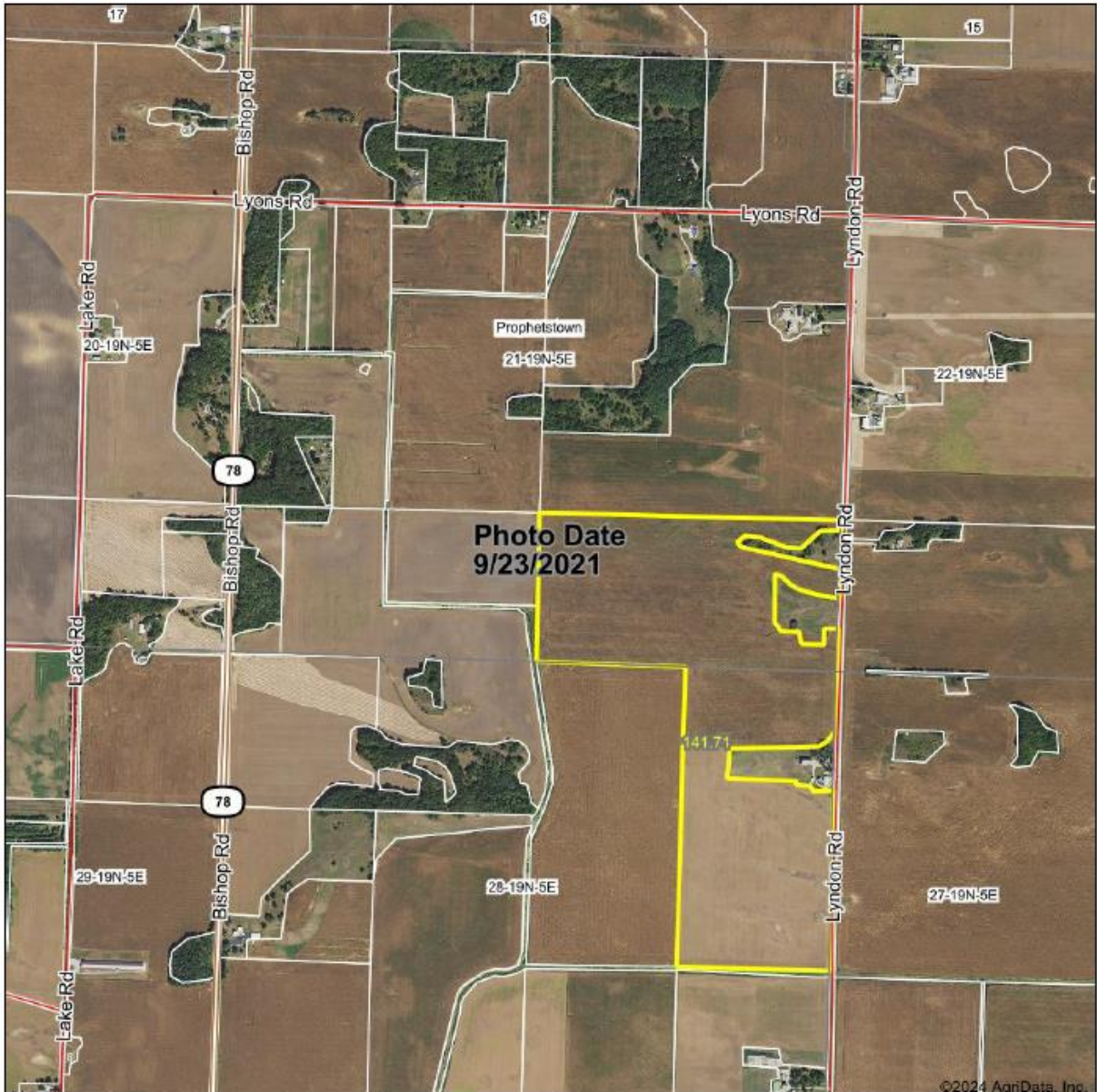
1800E

1900E

2000E



Aerial Map



©2024 AgriData, Inc.

BRUMMEL
LAND COMPANY

183830763.COM
PHONE: 815.674.3000
info@brummell.com
Mark Brummel, Illinois Broker

REAL ESTATE AND COMMERCIAL REAL ESTATE

Maps Provided By:

surety
CUSTOMER ONLINE MAPPING

© AgriData, Inc. 2023 www.AgriDataInc.com

Field borders provided by Farm Service Agency as of 5/21/2008.

Boundary Center: 41° 38' 39.2, -89° 55' 30.92

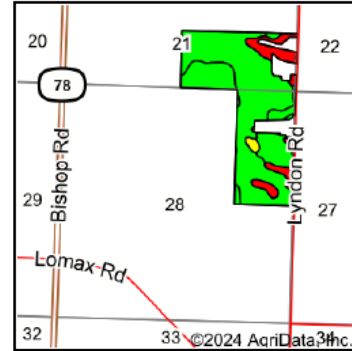
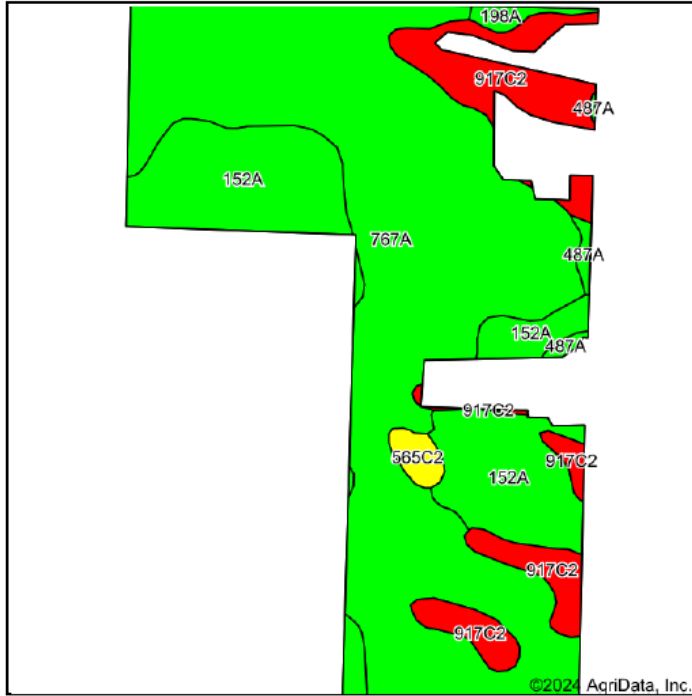
0ft 1347ft 2694ft

28-19N-5E
Whiteside County
Illinois



1/4/2024

Soils Map



State: **Illinois**
 County: **Whiteside**
 Location: **21-19N-5E**
 Township: **Prophetstown**
 Acres: **141.71**
 Date: **1/4/2024**



Maps Provided By:



© AgriData, Inc. 2023 www.AgriDataInc.com



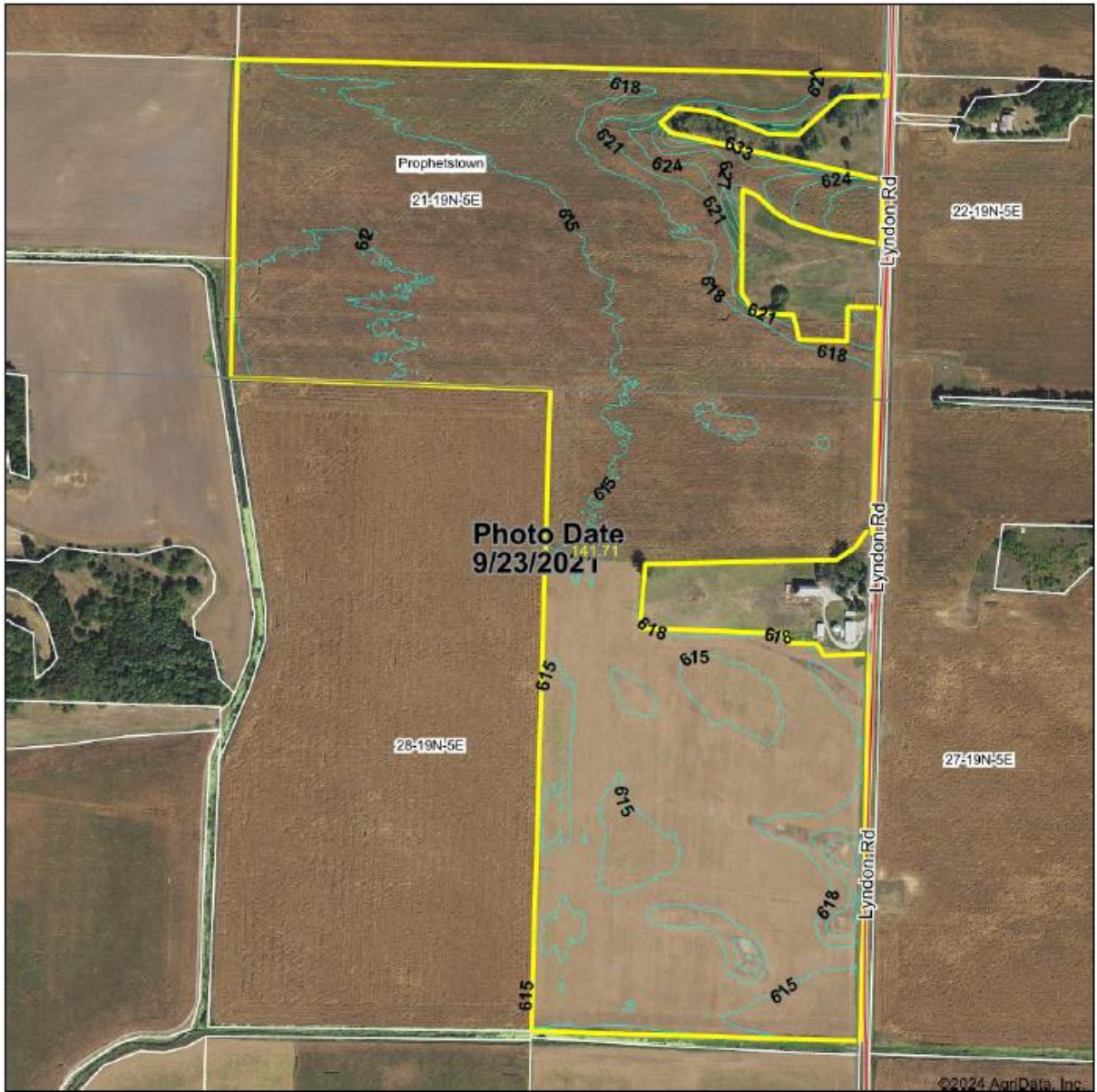
Soils data provided by USDA and NRCS.

Area Symbol: IL195, Soil Area Version: 20									
Code	Soil Description	Acres	Percent of field	Il. State Productivity Index Legend	Corn Bu/A	Soybeans Bu/A	Wheat Bu/A	Oats Bu/A ^b	Crop productivity index for optimum management
767A	Prophetstown silt loam, 0 to 2 percent slopes	89.77	63.3%		190	59	70	94	138
**152A	Drummer silty clay loam, 0 to 2 percent slopes	31.71	22.4%		**195	**63	**73	**100	**144
**917C2	Oakville-Tell complex, 5 to 10 percent slopes, eroded	16.37	11.6%		**118	**40	**49	**59	**88
**565C2	Tell silt loam, 5 to 10 percent slopes, eroded	1.62	1.1%		**142	**47	**56	**72	**104
198A	Elburn silt loam, 0 to 2 percent slopes	1.16	0.8%		197	61	74	94	143
487A	Joyce silt loam, 0 to 2 percent slopes	1.08	0.8%		180	57	70	95	132
Weighted Average					182.2	57.6	68.1	91.1	133.2

Table: Optimum Crop Productivity Ratings for Illinois Soil EFOTG are sourced from Bulletin 811 calculated Map Unit Base Yield Indices, and adjusted (Adj) for slope, erosion, flooding, and surface texture. Publication Date: 02-08-2023
 Crop yields and productivity (B811 EFOTG) are maintained at the following USDA web site: 2023 Illinois Soil Productivity and Yield Indices: <https://efotg.sc.egov.usda.gov/#/state/IL/documents/section=2&folder=52809>

^b Soils in the southern region were not rated for oats and are shown with a zero "0"

Topography Contours

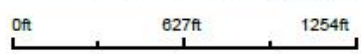


©2024 AgriData, Inc.



Field borders provided by Farm Service Agency as of 5/21/2008.

Source: USGS 3 meter dem
 Interval(ft): 3.0
 Min: 610.7
 Max: 636.5
 Range: 25.8
 Average: 615.8
 Standard Deviation: 2.92 ft



28-19N-5E
 Whiteside County
 Illinois

Boundary Center: 41° 38' 39.2, -89° 55' 30.92